

## A Fusion of the Art and Science of Light

### CATHODE cSTRP

sheet description: Details and Specs


file: cSTRPdetails.pdf

date: Aug 3, 2011

page: 1 of 2


#### E50 Electrical Specifications

Volts	Amps	Dimming	Watts	PLF(1)
120	.35	Wires: 2	4.7	
277	.15	Wires: 2	4.7	

Intensity   
 (1) Based on 7'6" lamps.


#### E100 Electrical Specifications

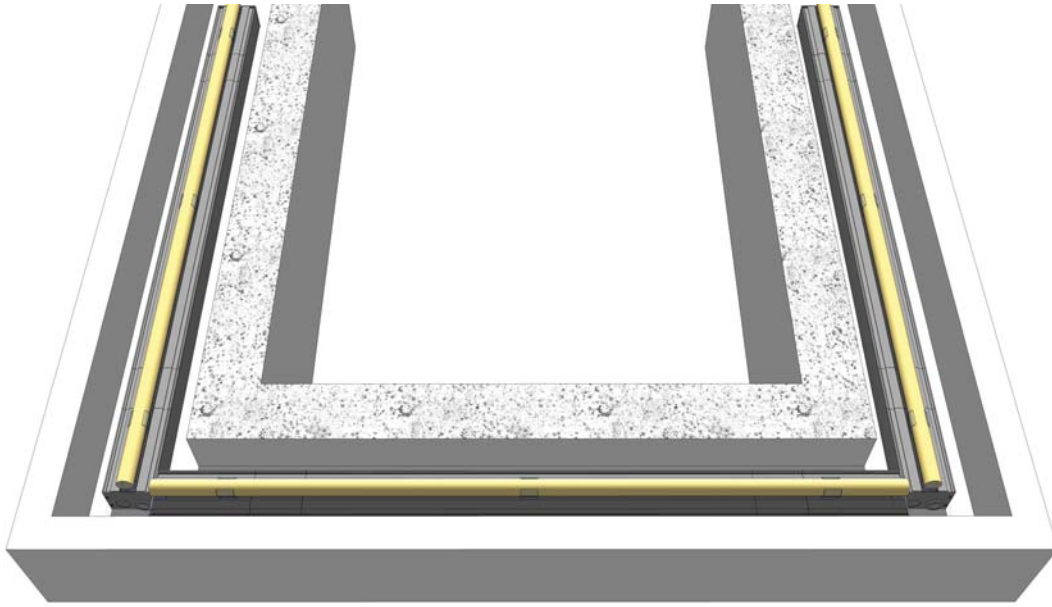
Volts	Amps	Dimming	Watts	PLF(1)
120	.4	Wires: 2	5.3	
277	.18	Wires: 2	6.6	

Intensity 

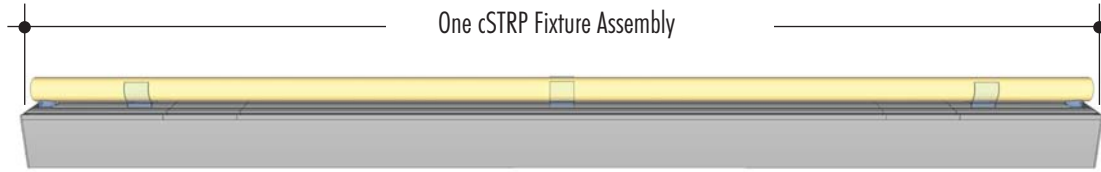
#### E200 Electrical Specifications

Volts	Amps	Dimming	Watts	PLF(1)
120	.78	Wires: 2	12.5	
277	.35	Wires: 2	12.5	

Intensity 



Lamp length varies from 4'0" to 7'6". Two-lamp fixtures are also available.  
 cSTRP ships prewired and assembled, ready and simple to install in minutes.



cSTRP are ready to daisy-chain using trade size KOs for continuous pass-thru of electrical conductors in conjunction with standard electrical fittings and connectors.



# DETAILS CATHODE cSTRP

	8300 Cold White - CDT
	6500 Daylight - DWT
	5000TC Ice White - IWT
	4500 Cool White - CLT
	3500 Soft White - SWT
	3000TC Warm White - WWT
	2400 Incandescent - KWT
	Candle White - CWT
	Pineapple - PPL
	Gold - GLD
	Traffic Light Yellow - TLY
	Orange - ORG
	Ruby Red (Neon Only) - RRD
	Coral Rose - CRS
	Magenta - MGT
	Violet - VLO
	Powder Blue - PWB
	Ocean Blue - OCB
	Super Blue - SBL
	Sky Blue - SKB
	Super Turquoise - STB
	Traffic Light Green - TLG
	Staybright Green - SBG

Project Name \_\_\_\_\_ Date \_\_\_\_\_ Linear Feet \_\_\_\_\_ Qty \_\_\_\_\_

**SPECIFICATION CODE:** Note: For a variation (custom) of this product contact ACL to request a variation number and information.

CS	Model	Lamp Qty	Environment	Color (s)	Primary	Dimming	Mount
cSTRP	E50	1 - 1 Lamp	DR - Dry	See Chart	120V	2 - 2 Wire	S - Surface
Standard Output	E100	2 - 2 Lamp		(1)	277V	3 - 3 Wire (3)	
Cold Cathode	E200	(2)					


(1) For multiple selections place a comma after each selection.  
 (2) Lamps per fixture. (3) 3 Wire applications are available, contact ACL for technical information.

# A Fusion of the Art and Science of Light


## CATHODE cSTRP

sheet description: Details and Specs  
 file: cSTRPdetails.pdf  
 date: Aug 3, 2011  
 page: 2 of 2


E50 Electrical Specifications			
Volts	Amps	Dimming	Watts PLF(1)
120	.35	Wires: 2	4.7
277	.15	Wires: 2	4.7

Intensity   
 (1) Based on 7'6" lamps.

E100 Electrical Specifications			
Volts	Amps	Dimming	Watts PLF(1)
120	.4	Wires: 2	5.3
277	.18	Wires: 2	6.6

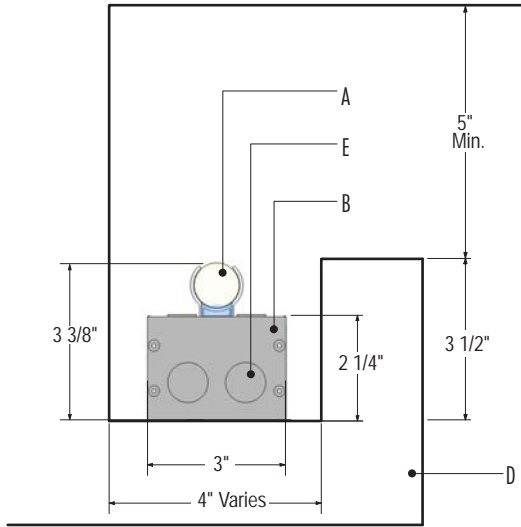
Intensity 

E200 Electrical Specifications			
Volts	Amps	Dimming	Watts PLF(1)
120	.78	Wires: 2	12.5
277	.35	Wires: 2	12.5

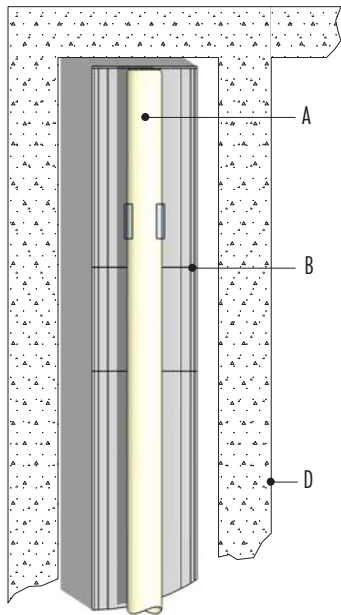
Intensity 

### FEATURES:

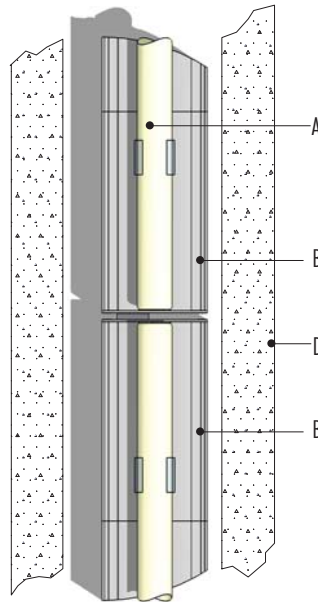
cSTRP offers standard and custom straight lamps, with seamless end-to-end illumination, free from socket shadow. cSTRP uses state of the art silent energy efficient electronic power supplies. cSTRP's shorter in height and more compact than traditional cold cathode systems. cSTRP fixtures are shipped pre-wired and assembled and install in minutes, resulting in significant cost savings for field installation labor. cSTRP's are ready to be daisy-chained using trade size KOs for continuous pass-thru of electrical conductors in conjunction with standard electrical fittings and connectors. Fixtures can be configured with one or two lamps available in a wide range of colors including several shades of white. cSTRP and cCRVS easily mate together with the same fittings. Combining cSTRP and cCRVS on the same project introduces greater flexibility for your design solutions.



Section Detail - cSTRP Lampholder End Condition

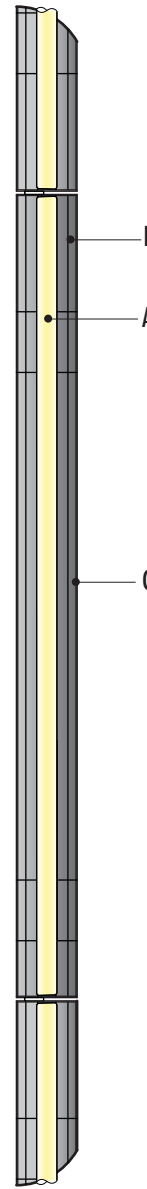


Plan Detail - cSTRP End View in Cove



Plan Detail - cSTRP Connect View in Cove

- A. Lamp
- B. Access Door
- C. Ballast
- D. Cove
- E. Knock Out



Plan of cSTRP Lamp Layout

# DETAILS CATHODE cSTRP

	8300 Cold White - CDT
	6500 Daylight - DWT
	5000TC Ice White - IWT
	4500 Cool White - CLT
	3500 Soft White - SWT
	3000TC Warm White - WWT
	2400 Incandescent - KWT
	Candle White - CWT
	Pineapple - PPL
	Gold - GLD
	Traffic Light Yellow - TLY
	Orange - ORG
	Ruby Red (Neon Only) - RRD
	Coral Rose - CRS
	Magenta - MGT
	Violet - VLO
	Powder Blue - PWB
	Ocean Blue - OCB
	Super Blue - SBL
	Sky Blue - SKB
	Super Turquoise - STB
	Traffic Light Green - TLG
	Staybright Green - SBG

Project Name	Date	Linear Feet	Qty
--------------	------	-------------	-----

**SPECIFICATION CODE:** Note: For a variation (custom) of this product contact ACL to request a variation number and information.

CS	Model	Lamp Qty	Environment	Color (s)	Primary	Dimming	Mount
cSTRP	E50	1 - 1 Lamp	DR - Dry	See Chart	120V	2 - 2 Wire	S - Surface
Standard Output	E100	2 - 2 Lamp		(1)	277V	3 - 3 Wire (3)	
Cold Cathode	E200	(2)					

(1) For multiple selections place a comma after each selection.  
 (2) Lamps per fixture. (3) 3 Wire applications are available, contact ACL for technical information.